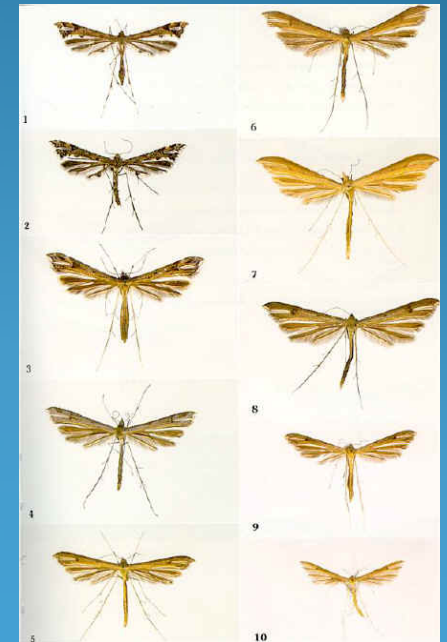
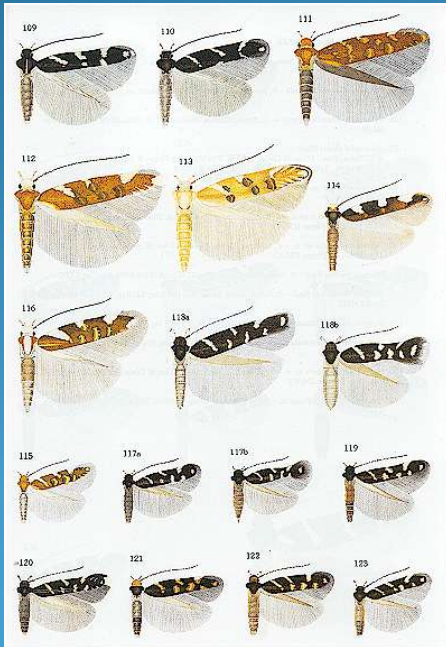


MICROLEPIDOPTERA

Identification Lab





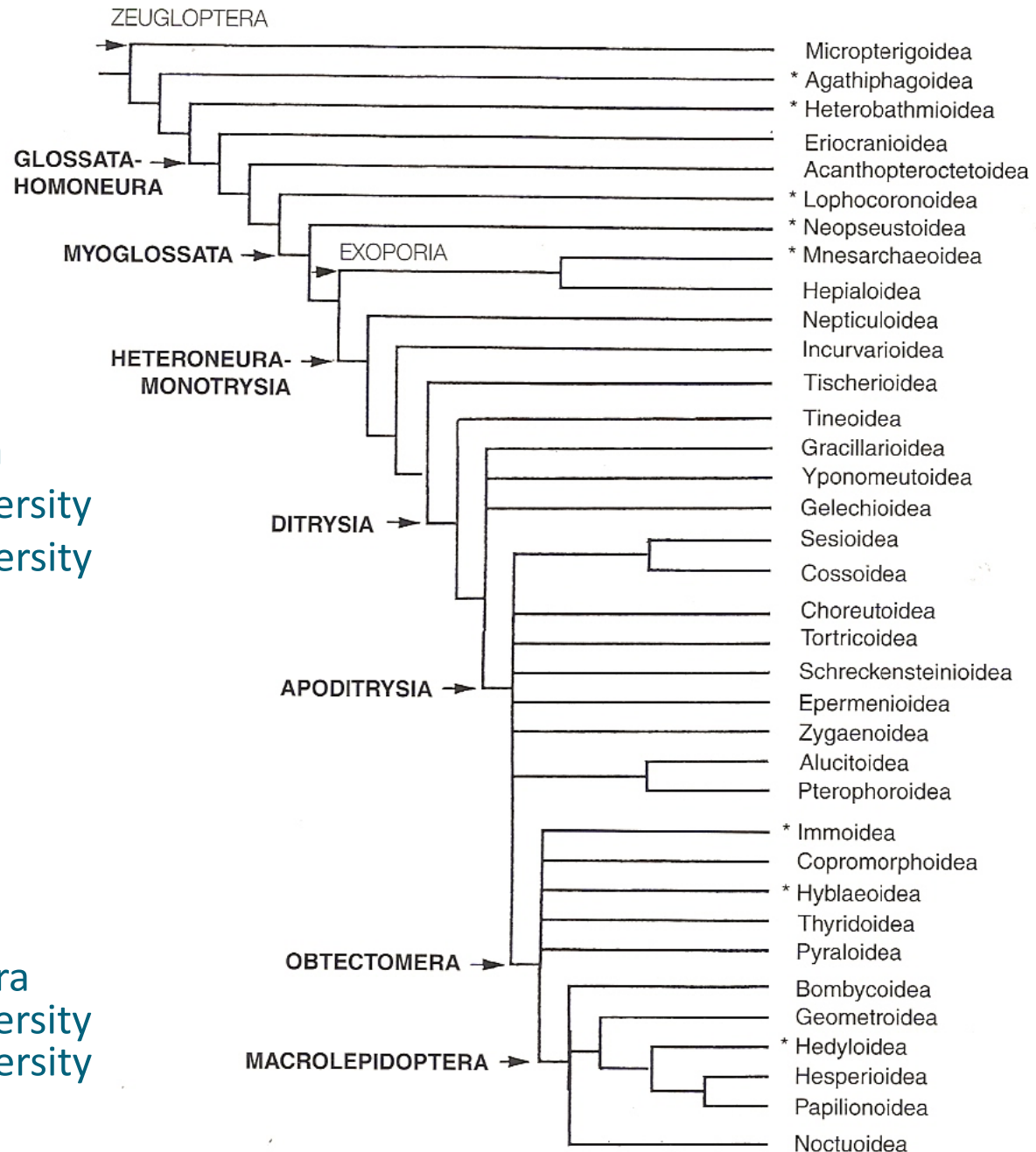
Microlepidoptera

30% of the species diversity
75% of the familial diversity



Macrolepidoptera

70% of the species diversity
25% of the familial diversity



Tineiodea

Tineidae (clothes moths)



Acrolophinae (subfamily of Tineidae)



Psychidae (bagworms)



Tineiodea

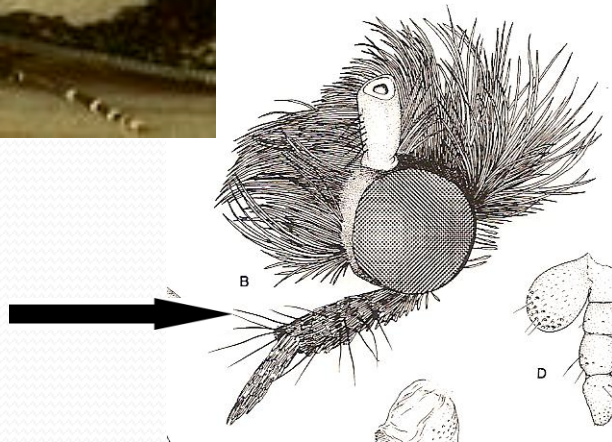
Tineidae (clothes moths)

Fine, erect scales on head

Often with conspicuous maxillary palpi

Labial palpi short to moderately long (sometimes a little paddle-shaped), often with a few fine black bristles

Forewing usually somewhat shiny



Tineiodea

Tineidae (clothes moths)

Fine, erect scales on head

Often with conspicuous maxillary palpi

Labial palpi short to moderately long (sometimes a little paddle-shaped), often with a few fine black bristles

Forewing usually somewhat shiny



Acrolophinae (subfamily of Tineidae)

Fuzzy head and body

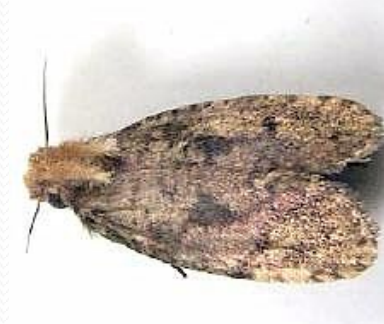
Large, dark adults

Males often with elongate labial palpi, extending over dorsum of head and thorax

Tineiodea

Tineidae (clothes moths)

- Fine, erect scales on head
- Often with conspicuous maxillary palpi
- Labial palpi short to moderately long (sometimes a little paddle-shaped), often with a few fine black bristles
- Forewing usually somewhat shiny



Acrolophinae (subfamily of Tineidae)

- Fuzzy head and body
- Large, dark adults
- Males often with elongate labial palpi, often extending over dosum of thorax



Psychidae (bagworms)

- Wings dark-smoky [scales usually lost]
- Short antennae (feathery at base)
- Characteristic larval cases



Yponomeutoidea

Yponomeutidae (ermine moths)



Yponomeutidae
Yponomeuta sp.

Attevidae (ailanthis webworm)



Attevidae
Atteva aurea

Plutellidae (diamondback moth)



Plutellidae
Plutella xylostella

Yponomeutoidea

Yponomeutidae (ermine moths)

Smooth scaled head

Palpi slender, smooth-scaled

Proboscis unscaled

Apex of hindwing usually rounded



Yponomeutidae
Yponomeuta sp.



Attevidae
Atteva aurea



Plutellidae
Plutella xylostella

Yponomeutoidea

Yponomeutidae (ermine moths)

Smooth scaled head

Palpi slender, smooth-scaled

Proboscis unscaled

Apex of hindwing usually rounded



Yponomeutidae
Yponomeuta sp.

Attevidae (ailanthis webworm)

Smooth scaled head

Palpi slender, smooth-scaled

Proboscis unscaled

Apex of hindwing usually rounded

Colorful moths (characteristic pattern)



Attevidae
Atteva aurea



Plutellidae
Plutella xylostella

Yponomeutoidea

Yponomeutidae (ermine moths)

- Smooth scaled head
- Palpi slender, smooth-scaled
- Proboscis unscaled
- Apex of hindwing usually rounded



Yponomeutidae
Yponomeuta sp.

Attevidae (ailanthis webworm)

- Smooth scaled head
- Palpi slender, smooth-scaled
- Proboscis unscaled
- Apex of hindwing usually rounded
- Colorful moths (characteristic pattern)



Attevidae
Atteva aurea

Plutellidae (diamondback moth)

- Smooth scaled head
- Labial palpi with rough-scaled second segment, smooth-scaled, upturned third
- Proboscis unscaled
- Apex of hindwing oblong-lanceolate with pointed apex



Plutellidae
Plutella xylostella



Gelechioidea



Upturned labial palpi
Scaled proboscis

Coleophoridae



Depressariidae



Blastobasidae



Oecophoridae



Gelechiidae



Gelechioidea

Depressariidae(Ethmiinae)

- Head smooth scaled
- Palpi moderately long, upturned
- Proboscis scaled
- Hindwing with rounded apex
- Characteristic black and white forewing pattern
- Pale yellow-orange abdomen



Ethmiinae - *Ethmia*

Depressariidae(Stenomatinae)

- Head smooth scaled
- Palpi moderately long, upturned
- Proboscis scaled
- Hindwing with rounded apex
- Forewing pattern variable



Stenomatinae - *Antaeotricha*



Stenomatinae - *Rectiostoma*

Gelechioidea

Oecophoridae

Head smooth-scaled

Palpus large, upturned

Proboscis scaled

Apex of hindwing rounded
(really variable)



Oecophoridae
Promalactis



Oecophoridae
Callima



Oecophoridae
Pleurota

Gelechioidea

Coleophoridae (case-bearers)

Head a little shaggy

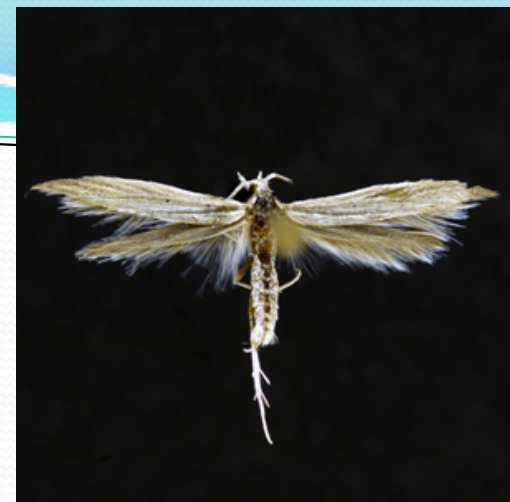
Labial palpi usually porrect (straight), not conspicuously upturned, and smooth-scaled

Proboscis scaled

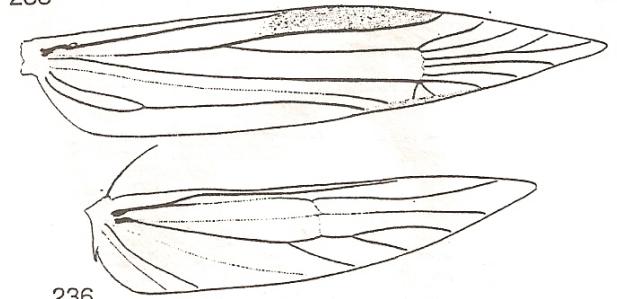
Narrow, lanceolate wings (pointed apically)

Inconspicuous paired patches of special scales/spines subdorsally on most abdominal segments

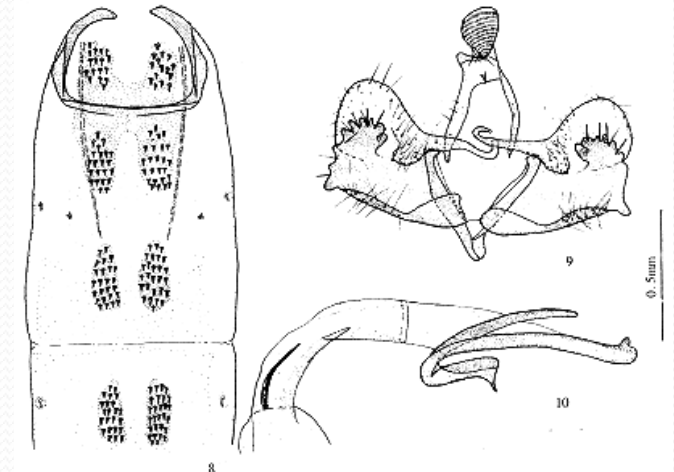
Larvae are case-bearers



233



236



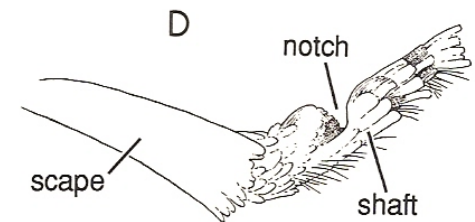
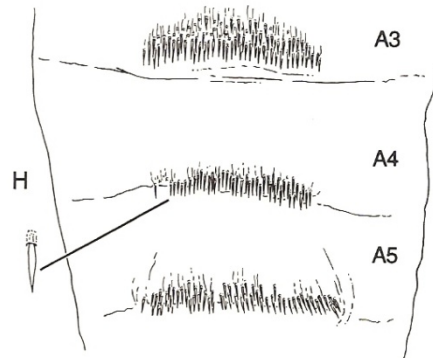
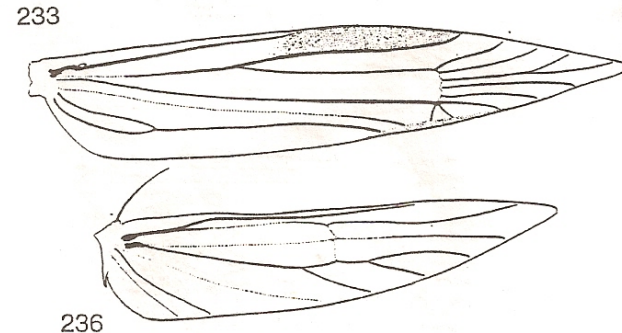
Gelechioidea

Blastobasidae (ugly brown moths)

Smooth scales on head
Shorter upturned labial palpi
Proboscis scaled
Wings “broadly lanceolate”
Rows of bronze spines on abdominal segments
Males of some species with notch near base of antenna



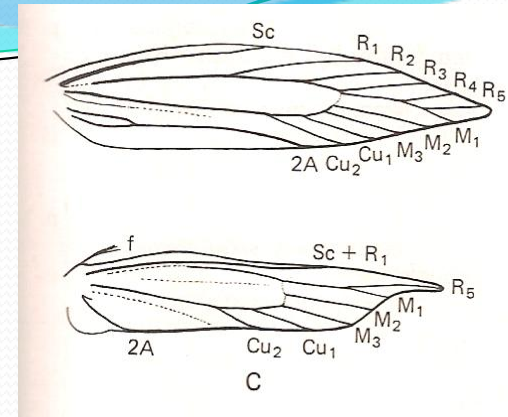
Blastobasidae
Blastobasis



Gelechioidea

Gelechiidae

Smooth scaled head
Long upturned labial palpi
Proboscis scaled
Hindwing with falcate apex
(at least pointed)
Pattern and shape extremely
variable



Tortricidae

Head rough scaled

Labial palpi moderate to short,
weakly upturned or porrect

Proboscis naked

Wings with bell-shape silhouette in
resting posture (e.g., Archipini)

Males of many species with
secondary scales (e.g., FW costal
fold, densely scaled legs)



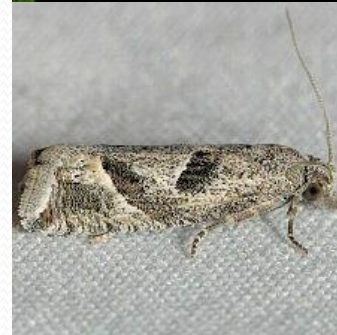
Tortricinae
Argyrotaenia



Tortricinae
Choristoneura



Tortricinae
Sparganothoides



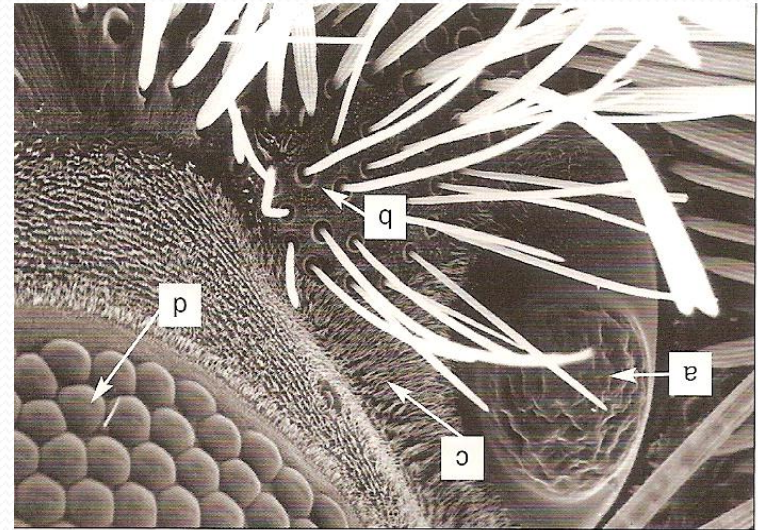
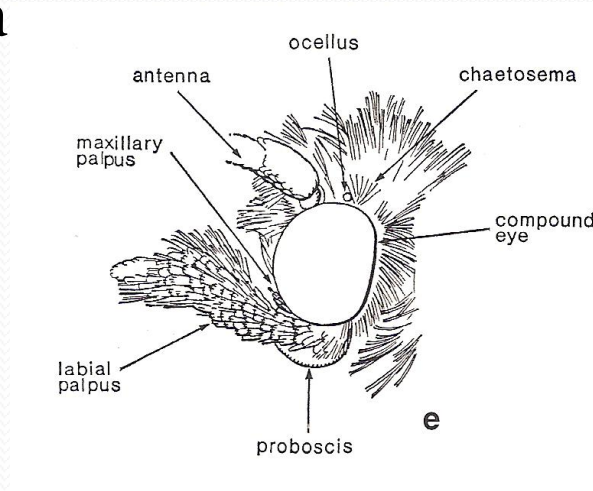
Olethreutinae
Pelochrista



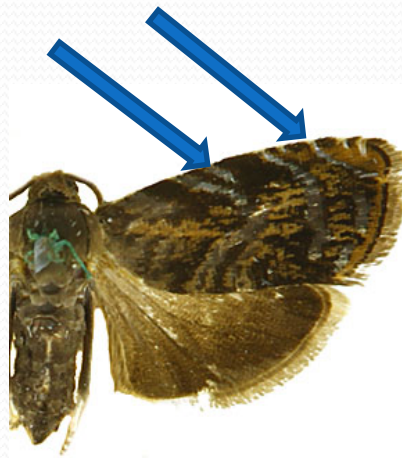
Olethreutinae
Grapholita

Tortricidae

Chaetosemata



Costal strigulae



Sesiidae and Pterophoridae

Sesiidae

Wasp and bee
mimics

Antennae with
distal scale tuft

Usually with clear
wings

Diurnally active

Most easily
collected using
pheromones

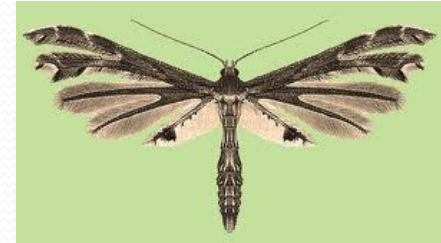


Pterophoridae

Divided wings

Long, slender legs

Unique resting
posture



Zygaenoidea

Limacodidae

Nocturnal

Short triangular forewing

Basal portion of antennae feathery

Legs somewhat furry



Megalopygidae

Nocturnal

Short triangular forewing

Feathery antennae

Legs very furry



Zygaenidae

Frequently diurnal

Slenderer body

Feathery antennae

Leg more normal

